



Dlite USB

Compulite Systems (2000) Ltd.

Dlite USB Version 20.0R4 / 20.0R4.1.1

Dlite USB Software Upgrade instructions

These are instructions on how to upgrade your Dlite software to the new version "20.0R4/4.1.1".

Important:

- Software upgrade **must** be done using the Dlite tool application included in this package.
- There are 2 types of Dlite USB Consoles hardware. Each type has a different installation file.
- This installation file is for Dlite console with a **USB port ONLY!** Dlite consoles with a floppy drive will stop functioning if you attempt to install this version.
For Dlite floppy consoles please download the Dlite floppy software version from our web site.
- Please backup your current show on the Dlite Console.

Requirements:

- External screen



- USB mouse



- USB stick





Dlite USB

Compulite Systems (2000) Ltd.

Dlite USB Version 20.0R4 / 20.0R4.1.1

SW Upgrade Instructions:

Checking the type of Console Hardware

There are 2 types of Dlite USB Consoles hardware & each type has a different installation file.
In order to check the type of installation needed for your console, please follow the next steps:

- A. Power up the console
- B. press **[SETUP, SYSTEM OPTIONS]**
- C. The SW version will be presented on the LCD touch screen.

Behavior	Defaults	Tools	I/O
Versions: SW: 20.0.R???			
	O.K.		

- D. Dlite USB is divided into 2 types of hardware:
 - Type **1** will have a SW version of **20.0.R4**
 - Type **2** will have one of the following SW versions: **20.0.R4.1 / 20.0.R4.1.1 / 20.0.R4.2**
 - For any other type of version please contact compulite support team.

SW Upgrade

- A. Connect a USB stick to the PC in which the folders were extracted to with minimum 10 MB of free space.
- B. Extract the relevant version for your console According to the type of hardware that we checked above.
- C. If your console suite Type **1** (20.0.R4)
 - Please extract a file named "**Ver20.0R4.zip**" password is **4**
- D. If your console suite Type **2** (20.0.R4.1 / 20.0.R4.1.1 / 20.0.R4.2)
 - Please extract a file named "**Ver20.0R4.1.1.zip**" password is **4.1.1**
- E. From the extracted folder, copy the file named "**DliteSW.exe**" & paste it to the folder named "USB console"

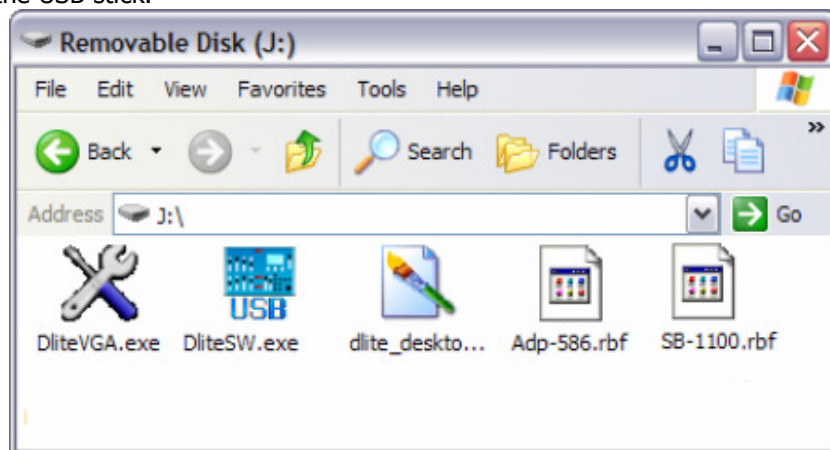


DLite USB

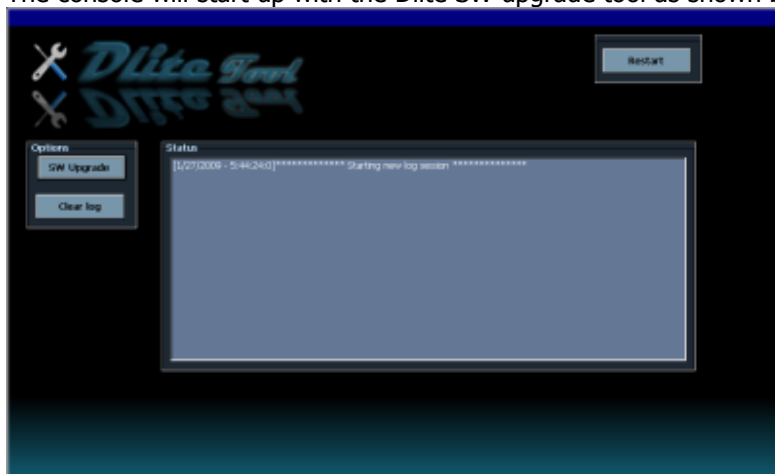
Compulite Systems (2000) Ltd.

DLite USB Version 20.0R4 / 20.0R4.1.1

- F. Copy **ALL** the **CONTENT** of the "USB console" folder (a total of 5 files) to the ROOT dir of the USB stick.



- The files can not be inside a folder on the USB stick, otherwise the Dlite will not be able to recognize them in the SW upgrade procedure.
- G. Disconnect the USB stick from your PC
H. Shut down your Dlite USB Console.
I. Connect the external monitor and the USB mouse to the console
J. Power up the console again & after exactly **5** seconds connect the USB stick to the **FRONT** USB connector on the console. (DO NOT connect the USB stick via a USB hub)
K. The console will start up with the Dlite SW upgrade tool as shown below.



- If the window above is not shown, or the console prompts a "No Bootable device available" message, please go back to step [H](#)



Dlite USB

Compulite Systems (2000) Ltd.

Dlite USB Version 20.0R4 / 20.0R4.1.1

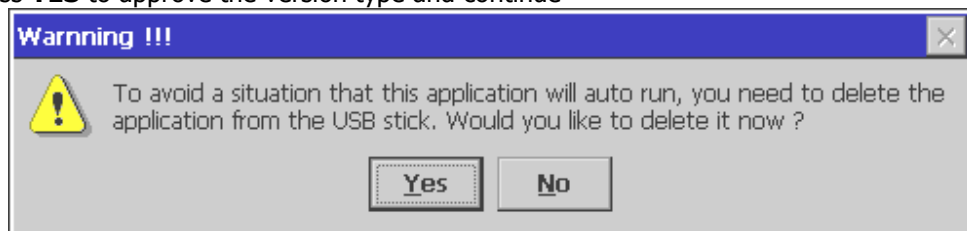
L. Press **SW Upgrade**



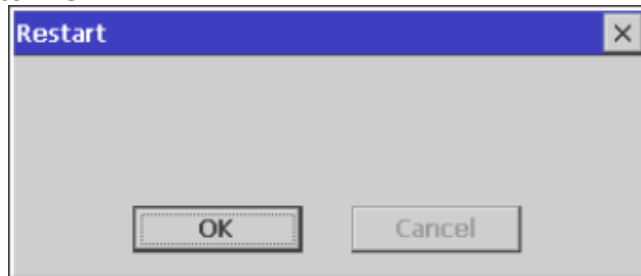
M. Make sure that the version presented on screen is correct according to your Dlite type we checked earlier.

- If this is not the case, please go back to the section of [checking your Console Type](#).

N. Press **YES** to approve the version type and continue



O. Press **YES**



P. Press **OK** & the console will RESTART itself.

Q. **Immediately** disconnect the USB stick from the console.

- If the console does not respond, Shut down the console & power it on again.

R. The console will boot up with the new Software version.

S. When prompt on the touch screen that warm data is corrupted press **YES**

T. Press **[SETUP, SYSTEM OPTIONS]** & verify that the console version is according to your console type.

U. Press **[SETUP, SYSTEM OPTIONS, TOOLS, CLEAR SYSTEM, ALL DATA, OK]** to clear any old data.

V. Dlite USB Console software upgrade is complete.