



Compulite Systems (2000) Ltd.

Updating Vector Firmware Procedure

These are instructions on how to upgrade the Firmware on your Vector console and Vector External Wings.

The instructions below assume that the console is running, an alphanumeric keyboard is attached, and an external mouse is connected at the back panel of the console.

ATTENTION:

- After updating the Vector External Wings (PB, Editor & Channel wing) with the new Firmware, you will not be able to connect them with Vector running Software **LOWER then version 3.17.R01!**
- This Update is possible **ONLY** if your panel's version is **10** and up.
- Please refer to the [Vector Firmware Board types](#) table to check your current panel versions and use this update package in case they are not equivalent.
- Make sure to read the instructions completely to understand the full procedure.
- If you encounter difficulties or have any questions, do not hesitate to contact your local distributor or Compulite Support Team via e-mail at: support@compulite.com

Firmware Update Highlights

Note: The Firmware Package work from Vector 3.18 software and UP ONLY!

The Vector firmware updates include the following new fixes:

- ✚ Vector Violet Panel – fixed wheels resolution to support Vector 3.18 software & trackball being too sensitive for slight vibrations on the console.
- ✚ Vector Editor Panel - fixed a display corruption with the Green LCD display (applies to ALL vector Models)
- ✚ Vector Remote PB and Editor wings
 - ❖ Fixed a connection problem of the Remote PB and Editor wing to the Vector Violet.
 - ❖ Add the External Panel software version on the first screen of the Panel before it connects to the Vector.
 - ❖ Fixed an LCD corruption on Editor and PB wing



Compulite Systems (2000) Ltd.

Updating Vector Firmware Procedure

Procedure Requirements:

1. A running and working Vector Console with software version **3.18.R01** at least!
 - a. To check your panel's version go to the **Tools** menu->**RT Status** and check the panel's version and write down the Panel Version numbers.
 - b. If you **do not have** Panel **Version 10** and up, contact Compulite Support team for further instructions.
2. A copy of the latest Vector Firmware Files.
3. In order to update Vector External wings, you need to connect them via ethernet and a **switch** to the Vector Network and make sure the Vector recognizes them.
 - a. Connect a regular Ethernet cable from the Vector Data port into a switch
 - b. Connect the External Wings with a regular Ethernet cable into the switch which the Vector console is connected to.
 - c. In the case you use a Vector PC, the procedure is done in the same way.

LIMITATION: you can update up to 3 panels in sequence! In order to update more panels you will need to **shut down the console after every 3 Panel updates**, and then turn it on again to continue the update.

ON VXworks Vector, the update progress is seen on the external RT monitor, if connected.

Vector Firmware Board types

Board Type Name	Firmware Full name	NEW Version #
Left RED & Blue Vector Wing	T001V012_WING1_RED_BLUE.S	12
Vector Red Middle Wing	T002V012_WING2_RED_ONLY.S	12
Vector Red/Blue Editor	T003V014_EDITOR_RED_BLUE.S	14
SMS	T006V012_SMS.S	12
Vector Green/Orange Editor	T011V024_EDITOR_GREEN_ORANGE.S	24
Vector Violet Editor Panel	T022V026_VIOLET_EDITOR.S	26
Remote PB Wing (External)	T016V015_REMOTE_PB_WING.S	15
Remote Editor Wing (External)	T018V027_REMOTE_EDITOR_WING.S	27
Remote Channel Wing (External)	T019V015_REMOTE_CHANNEL_WING.S	15

NOTE: Update ALL your panels and External wings according to the Table above to be sure you will have the latest firmware versions.

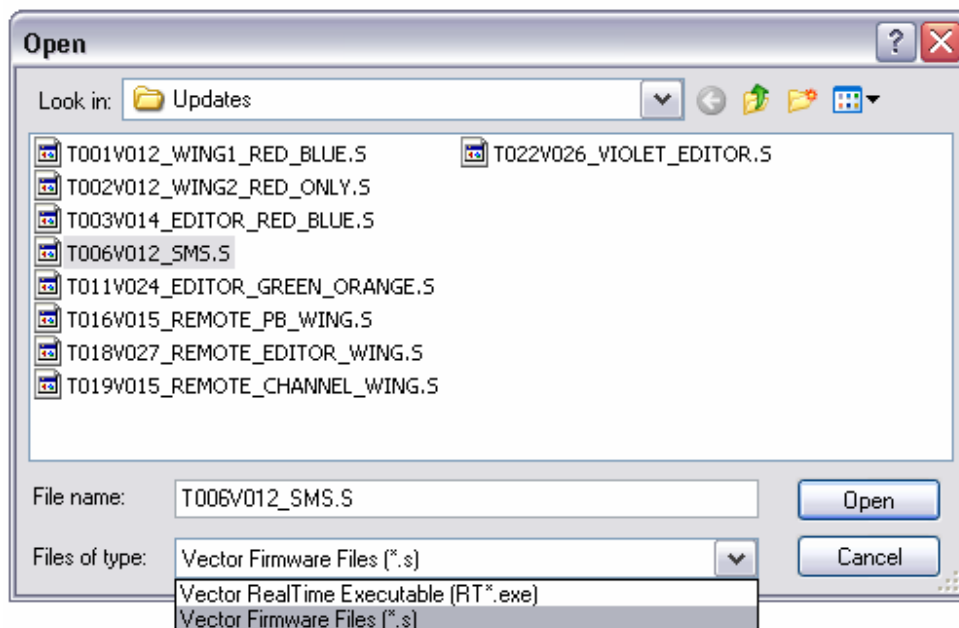


Compulite Systems (2000) Ltd.

Updating Vector Firmware Procedure

Procedure steps




1. Save a copy of your show file.
 - Copy the "Vector Firmware Package_Dec_2010" to a USB stick or a portable device and copy the files to the Vector – **Do not run the update from any portable Device!**
 - We recommend placing the firmware files in *D:\Program Files\Compulite Vector\Config\Updates* so it will be easier to locate them.
 - Make sure the Vector is up and running.
2. Open the **Tools** menu on Vector's main screen and choose **Software Update**.
3. A dialog box opens, showing the files in "D:\Program Files\Compulite Vector\Config\Updates".
 - If the files were placed in a different location, browse to that location.
4. In the *File Types* drop down menu, choose "Vector Firmware File (*.S)"







Compulite Systems (2000) Ltd.

Updating Vector Firmware Procedure

5. Choose the file type you wish to update according to the table below:
6. After you choose the file type, click **Open** to start the Update
 -  I.e. For updating the SMS (SMPTE_MIDI) panel, choose the file named "T006V012_SMS.S" and click on the **Open** button.
7. When the Update starts you will see a message on the command line "*Restart RT...*"
 -  When updating Wing or Editor Panel (including Remote PB wing, Editor and Channel wings), some key Led will light up until the update is done and then it will turn off, indicating the progress is over.
 -  On VDMX and SMS, the LED's on the boards will turn orange until the update is finished.
8. The updates time is approximately 1 minute.

NOTE: In some cases, after the following time, you do not see any change in the panel state (LED still lit etc') you will need to re-load the firmware file again.
9. When the update is done, shutdown the system and turn it on again, for the initialization of the panels' firmware.
 -  Continue running the panel Updates until all your panels are up-to date.
10. When the console is on again after the shutdown, go to the **Tools** Menu-> **RT Status** to check if the versions have been updated.
 -  In the case a panel was not updated, you will need to update it again.