



# Vector PC Wing

---

**Firmware Update Version 0.30**  
**Release Notes & Installation Guide**

Release Date: 7/5/2012

**Compulite Systems (2000) Ltd.**

9 Hanagar St. Neve Ne'eman B Industrial Zone Hod Hasharon, 45421, Israel  
Tel: 972 9 744 6555 ~ Fax: 972 9 746 6515 ~ [www.Compulite.com](http://www.Compulite.com)

Copyright © 2012 Compulite Systems (2000) Ltd. All rights reserved.

This guide is delivered subject to the following conditions and restrictions:

This product or document is protected by copyright and distributed under licenses restricting its use, copying, distribution and decompilation. No part of this product or document may be reproduced in any form by any means without the prior express written authorization of Compulite Systems (2000) Ltd. and its licensors (if any). Information contained herein is subject to change without notice.





# 1 Table of Contents

<b>1</b>	<b>Table of Contents .....</b>	<b>2</b>
<b>2</b>	<b>Version Highlights .....</b>	<b>3</b>
<b>3</b>	<b>Vector PC Wing Keycap Changes.....</b>	<b>4</b>
<b>4</b>	<b>Installing Firmware .....</b>	<b>5</b>
	Getting Started .....	5

## 2 Version Highlights

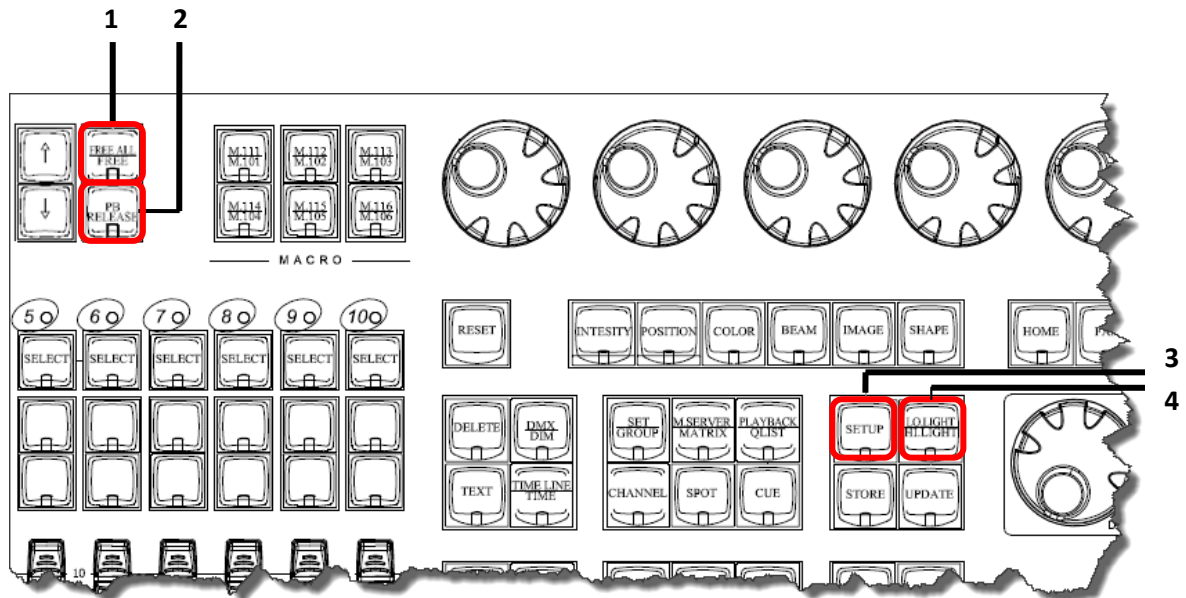
Vector PC Wing Firmware version 0.30 contains the following improvements:

- Connection time between the PC Wing and a console or Vector PC has been reduced.
- New LED connection indications have been added:

Action	LED indication
Powering Up	All LED's will blink for a split second.
Scanning the network	<b>Green LED's</b> All <b>Playback</b> LED's will run in a progress bar fashion from left to right.
During connection	All LED's will remain ON until connection is complete.
Connection established	All LED's will blink for a split second.
NO Network	<b>Red LED's</b> All <b>Playback</b> LED's will run in a progress bar fashion from left to right.

### 3 Vector PC Wing Keycap Changes

Due to client requests we have changed certain Keycaps on the Vector PC Wing. Please contact your local distributor.



No.	Old Keycap	New Keycap
1	Playback	Free All / Free
2	Rate	PB Release
3	Store+	Setup
4	Blank	Lo.Light / Hi.Light

## 4 Installing Firmware

The following procedure is for updating the Firmware on the Vector PC Wing.

Before proceeding please make sure of the following:

- An alphanumeric keyboard is attached
- An external mouse is connected to the Vector system

### ATTENTION!

- This update is **ONLY** for Vector software version **3.20R02** and above.
- Make sure to follow the installation instructions in full.
- To view the update progress, open the RT monitor by double clicking on the cog-wheel sign.
- If you encounter any problems, please contact your local distributor or contact the Compulite support team: [support@compulite.com](mailto:support@compulite.com)

### Getting Started

Before installing the Firmware update, please check that you have the following:

- A running and working Vector console or PC with software version 3.20R02 and above. The software version can be viewed from Tools ► RT Status.
- The new Firmware file (T025V030.S)
- The PC Wing needs to be connected via an Ethernet hub to the Vector network (Data port):

#### To connect the Wing to the network hub

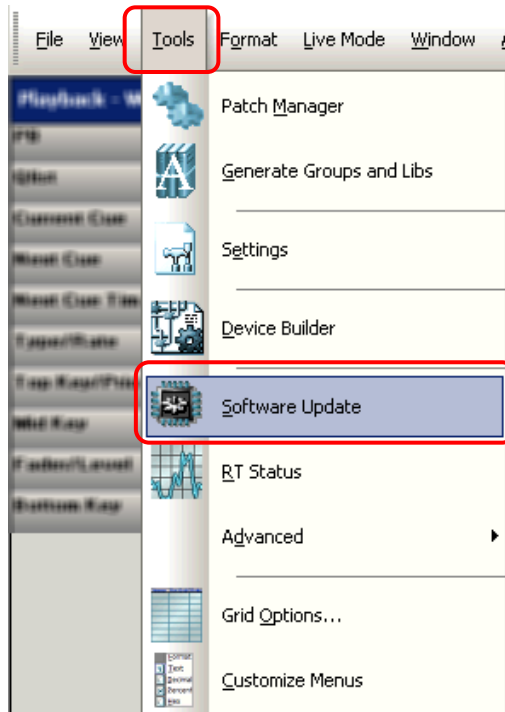
1. Connect a regular Ethernet cable from the Vector Data port or the Ethernet port on a Vector PC to the Ethernet hub.
2. Connect a regular Ethernet cable from the PC Wing to the same Ethernet hub as the console or vector PC.

#### To install firmware

1. Save a copy of your show file.
2. Stop any DMX transmission via Ethernet (VC, Art-Net or sACN).
3. Copy the Firmware file to a USB stick or portable device.

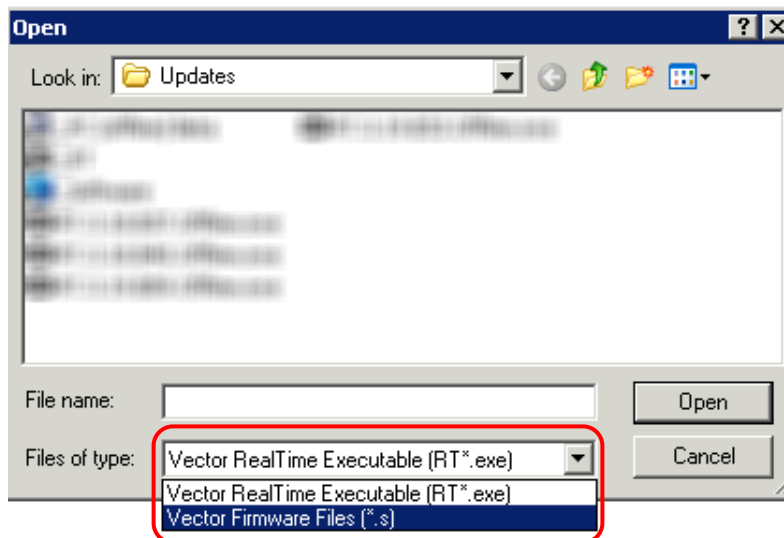
**Do not run the Firmware update from the USB or portable device!**

4. Copy the Firmware file from the USB or portable device to the Vector Updates folder:
  - For Vector console: *D:\Program Files\Compulite Vector\Config\Updates*
  - For Vector PC: *C:\Program Files\Compulite\ Vector Pc\Config\Updates*
5. Make sure the Vector console or Vector PC is ON.
6. From Vectors menu bar click on Tools ► Software Update.

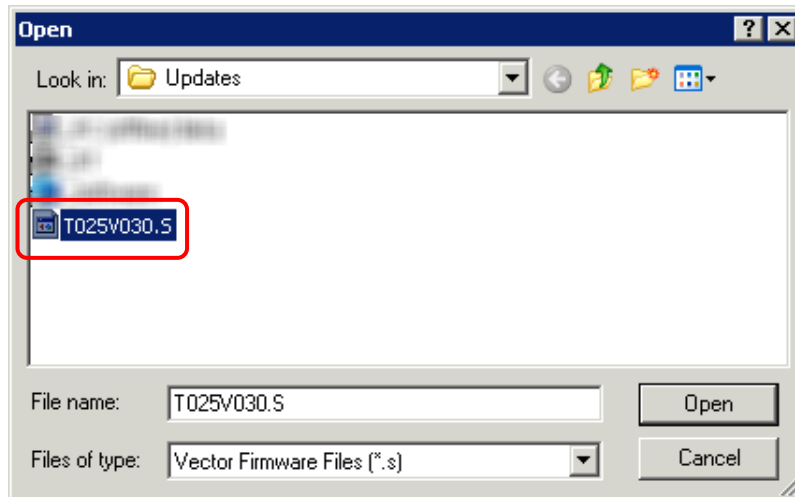


The Update dialog window opens.

7. From the Update dialog box click on the Files of Type drop down list and select Vector Firmware Files(\*.s).



8. Select the new Firmware update file and then click Open to start the Update.



9. The Update will begin and the message "Restarting RT..." will be displayed in the command line.

**Restarting RT...**

The update takes approximately 1 minute. The update progress can be monitored in the RT window.

**Note:** Some LED's on the PC Wing may light up during the update and then turn off when the update is complete.

**Note:** If the LED's do not turn off after a while (2 min or more) then re-load the firmware file again.

10. When the update is done shutdown the system and re-start the software.